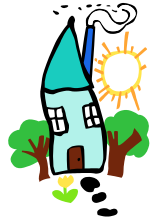


# Family As Faculty



Bringing Families & Educators



# Together

## College/University Partners

Ave Marie University

Barry University

Edison College

Florida Gulf Coast University

Community Collaborators

CHADD Of Lee County

Collier County School District

Charlotte County School District

Families First Of SW Florida

FDLRS Island Coast

Glades County School District

Hendry County School District

The School District Of Lee County

## FAMILY AS FACULTY APPLICATION

Name: \_\_\_\_\_

Address: \_\_\_\_\_

\_\_\_\_\_

\_\_\_\_\_

County: \_\_\_\_\_ Email: \_\_\_\_\_

Phone: (day) \_\_\_\_\_ (evening) \_\_\_\_\_

Child's Age(s): \_\_\_\_\_

Type(s) of Exceptionality: \_\_\_\_\_

**Please briefly answer the following questions:**

I am interested in participating in the Family as Faculty Program because:

\_\_\_\_\_

\_\_\_\_\_

\_\_\_\_\_

\_\_\_\_\_

The two things I want new teachers and professionals to know about working collaboratively with families are:

\_\_\_\_\_

\_\_\_\_\_

\_\_\_\_\_

\_\_\_\_\_

Personnel Development Partnership at Florida Gulf Coast University  
10501 FGCU Blvd. S.  
Ft Myers, FL 33965-6565  
239-590-7747/fax 239-590-7934  
msulliva@fgcu.edu